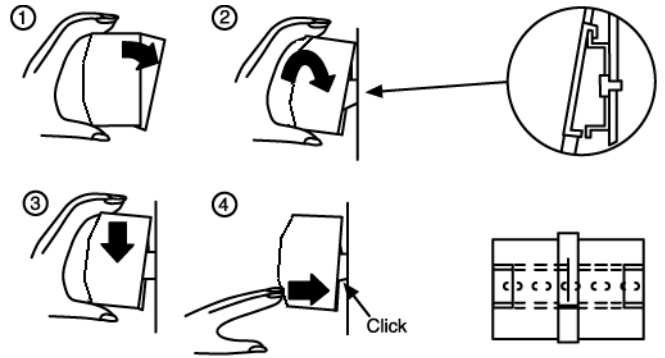


### SDN™ Series Mounting

#### DIN Rail Mounting

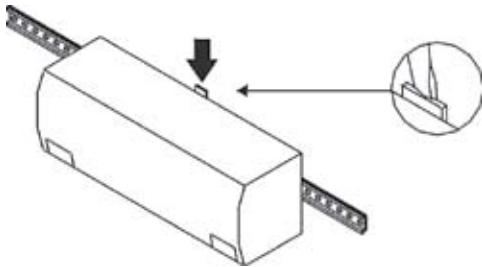
Snap on the DIN Rail:

1. Tilt unit slightly backwards
2. Put it onto the DIN Rail
3. Push downwards until stopped
4. Push at the lower front edge to lock
5. Shake the unit slightly to ensure that the retainer has locked



Alternative Panel Mount: Using the optional SDN-PMBRK2 accessory, the unit can be screw mounted to a panel.

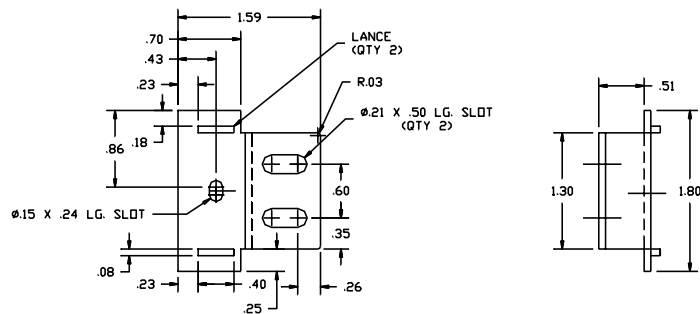
#### Detachment from DIN Rail:



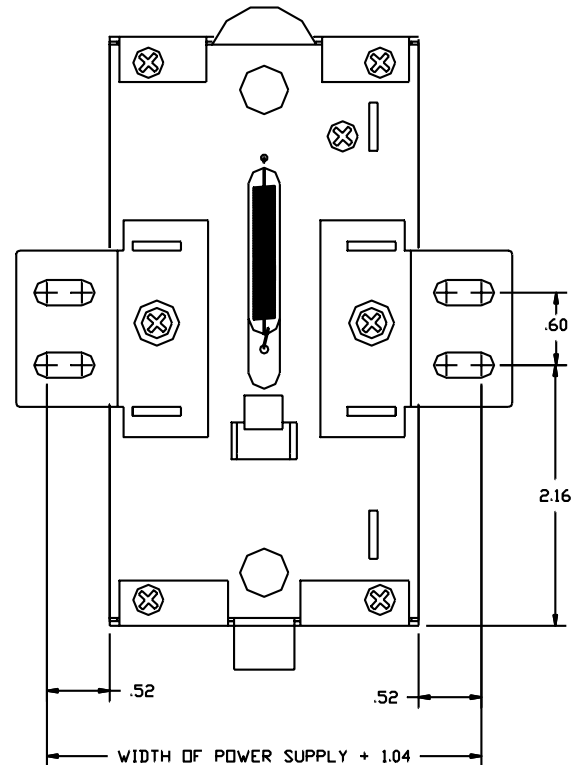
#### Chassis Mounting

Instead of snapping a SolaHD SDN™ unit on the DIN Rail, you can also attach it using the screw mounting set SDN-PMBRK2.

This set consists of two metal brackets, which replace the existing two aluminum profiles.



#### Dimensions



## SDN-P DIN Rail Series

The SDN DIN Rail power supplies provide industry leading performance. Sag Immunity, transient suppression and noise tolerant, the SDN series ensures compatibility in demanding applications. Power factor correction to meet European directives, hazardous location approvals and optional redundant accessories allow the SDN series to be used in a wide variety of applications. Wide operation temperature range, high tolerance to shock and vibration and reliable design make the SDN series the preferred choice of users everywhere.

### Features

- Power Factor Correction (per EN61000-3-2)
- Auto Select 115/230 Vac, 50/60 Hz Input
- Single Phase models meet SEMI F47 Sag Immunity
- Class 1, Zone 2 Hazardous Locations
  - ATEX approval on 2.5 through 10A, 24 Vdc Single Phase Models
  - ATEX approval pending on 12 Vdc and 48 Vdc single phase models
- Improved metal mounting clip
- DC OK Signal
- Adjustable Voltage
- SDN10-24-100P New Compact width (3.26")
- Parallel Capability standard on all units
- Industrial grade design
  - -10°C to 60°C operation without derating. Indefinite short circuit, overvoltage and overtemperature protection.
  - Powers high inrush loads without shutdown or foldback
  - Rugged metal case and DIN connector
- SDN2.5-24-100P and SDN4-24-100LP meet NEC Class 2
- Narrow width on rail for space critical applications
- User-friendly front panel
  - Large, rugged, accessible, multiple connection screw terminations
  - Easy installation
- Broad range of product to fit almost any application – 2.5 A through 40 A, 24 Vdc
- Single and three phase inputs available
- 12 Vdc and 48 Vdc single phase models available
- Highly efficient >90% switching technology
- High MTBF and reliability
- RoHS compliant



  
UL 508 Listed  
IND. CONT. EQ.  
E61379

  
UL 60950  
E137632  
CUL/CSA-C22.2  
No. 234-M90

  
EMC and  
Low Volt.  
Directive

### Related Products

- SDP™ Series
- SFL Series
- SCP Series
- SCL Series
- SDU UPS

### Applications

- Industrial/Machine Control
- Process Control
- Conveying Equipment
- Material Handling
- Vending Machines
- Packaging Equipment
- DeviceNet™
- Amusement Park Equipment
- Semiconductor Fabrication Equipment

### Accessories

- Chassis Mount Bracket (SDN-PMBRK2)

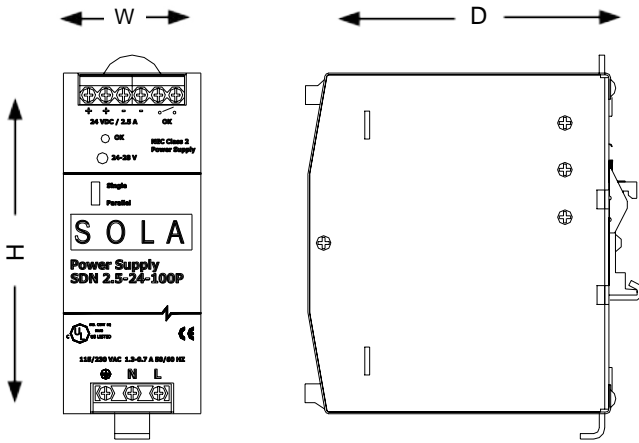
**SDN™ Specifications (Three Phase)**

Description	Catalog Number				
	SDN 5–24–480	SDN 10–24–480	SDN 20–24–480C	SDN 30–24–480	SDN 40–24–480
<b>Input</b>					
<b>Nominal Voltage</b>	1Ø or 3Ø 380-480 Vac		1Ø or 3Ø 380 - 480 Vac <sup>1</sup>	3Ø 380 - 480 Vac	
<b>-AC Range</b>	340 - 576 Vac				
<b>-DC Range<sup>2</sup></b>	450 - 820 Vdc				
<b>-Frequency</b>	47 - 63 Hz				
<b>Nominal Current<sup>3</sup></b>	0.5 A	0.8 A	1.5 A	2.0 A	3.0 A
<b>-Inrush current max.</b>	typ. < 18 A			typ. < 30 A	
<b>Efficiency (Losses<sup>4</sup>)</b>	> 90% typ. (12 W)	> 90% typ. (48 W)		> 90% typ. (72 W)	> 90% typ. (96 W)
<b>Power Factor Correction</b>	Units Fulfill EN61000-3-2				
<b>Output</b>					
<b>Nominal Voltage</b>	24 Vdc (22.5 - 28.5 Vdc adj.)				
<b>-Tolerance</b>	< ±2% overall (combination Line, load, time and temperature related changes)				
<b>-Ripple<sup>5</sup></b>	< 50 mVpp				
<b>Overvoltage Protection</b>	> 30 Vdc, but < 33 Vdc, auto recovery				
<b>Nominal Current</b>	5 A (120 W)	10 A (240 W)	20 A (480 W)	30 A (720 W)	40 A (960 W)
<b>-Peak Current</b>	6A, 2x Nominal Current < 2 sec.	12A, 2x Nominal Current < 2 sec.	25A, 2x Nominal Current < 2 sec.	35A, 2x Nominal Current < 2 sec.	45A, 2x Nominal Current < 2 sec.
<b>-Current Limit</b>	Fold Forward (Current rises, voltage drops to maintain constant power during overload up to max peak current)				
<b>Holdup Time<sup>6</sup></b>	> 40 ms		> 28 ms	> 20 ms	
<b>Parallel Operation</b>	5A through 30A units may be passively paralleled by selecting the "P" position of the switch on the unit. The SDN 40 contains active current balancing.				
<b>General</b>					
<b>EMC: -Emissions</b>	EN61000-6-3, -4; Class B EN55011, EN55022 Radiated and Conducted including Annex A.				
<b>-Immunity</b>	EN61000-6-1, -2; EN61000-4-2 Level 4, EN61000-4-3 Level 3; EN61000-4-6 Level 3; EN61000-4-4 Level 4 input and Level 3 output; EN61000-4-5 Isolation Class 4, EN61000-4-11;				
<b>Approvals</b>	CB Scheme, EN60950; UL508 Listed, cULus; UL60950, cRUus, CE (LVD 73/23 & 93/68/EEC). EN61000-3-2, UL60079-15 Class 1, Zone 2 Hazardous Location, Groups IIA, IIB, IIC w/T3 temp class up to 60°C Ambient.				
<b>Temperature</b>	Storage: -25°C...+85°C Operation. -10°C -60°C full power with operation to 70°C possible with a linear derating to half power from 60°C to 70°C (Convection cooling, no forced air required). Operation up to 50% load permissible with sideways or front side up mounting orientation. The relative humidity is < 90% RH, noncondensing; IEC 68-2-2, 68-2-3.				
<b>MTBF:</b>	> 1,110,000 hours	> 940,000 hours	> 550,000 hours	> 620,000 hours	> 490,000 hours
<b>- Standard</b>	MIL STD 217F @ 30°C				
<b>Warranty</b>	5 years				
<b>General Protection/ Safety</b>	Protected against continuous short-circuit, overload, open-circuit. Protection Class 1 (IEC536), degree of protection IP20 (IEC 60529) Safe low voltage: SELV (acc. EN60950)				
<b>Status Indicators</b>	Green LED on when $V_{out} = 18V$ or greater.				
<b>Installation</b>					
<b>Fusing -Input</b>	Internally fused				
<b>-Output</b>	Outputs are capable of providing high currents for short periods of time for inductive load startup or switching. Fusing may be required for wire/loads if 2x Nominal O/P current rating cannot be tolerated. Continuous current overload allows for reliable fuse tripping.				
<b>Mounting</b>	Simple snap-on system for DIN Rail TS35/7.5 or TS35/15 or chassis-mounted (optional screw mounting set SDN-PMBRK2 required).				
<b>Connections<sup>7</sup></b>	<b>Input:</b> IP20-rated screw terminals, connector size range: 16-10 AWG (1.5-6 mm <sup>2</sup> ) for solid conductors. 16-12 AWG (0.5-4 mm <sup>2</sup> ) for flexible conductors. <b>Output:</b> Two connectors per output, connector size range: 16-10 AWG (1.5-6 mm <sup>2</sup> ) for solid conductors.				
<b>Case</b>	Fully enclosed metal housing with fine ventilation grid to keep out small parts.				
<b>-Free Space</b>	25 mm above and below, 25 mm left and right, 15 mm in front		70 mm above and below, 25 mm left and right , 15 mm in front		
<b>H x W x D (inches/mm)</b>	4.88 x 2.91 x 4.55 (124 x 73 x 116)	4.88 x 3.5 x 4.55 (124 x 89 x 116)	4.88 x 5.9 x 4.55 (124 x 150 x 116)	4.88 x 9.72 x 4.55 (124 x 247 x 116)	4.88 x 11.1 x 4.55 (124 x 282 x 116)
<b>Weight (lbs/kg)</b>	1.7 lbs (.77 kg)	2.16 lbs (.98 kg)	3.97 lbs (1.8 kg)	4 lbs (1.81 kg)	6.6 lbs (2.99 kg)

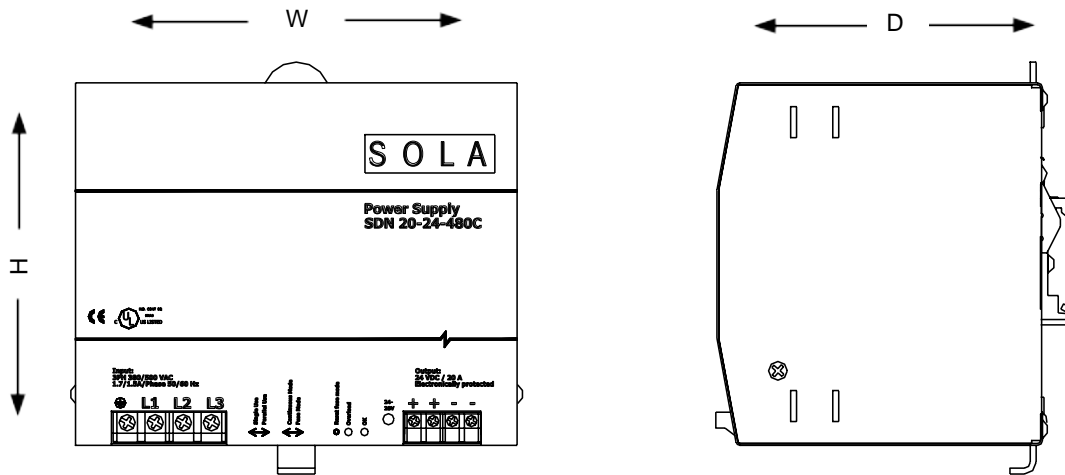
1. For the SDN 20-24-480C, single phase input is permissible, but output is derated to 75% (15 Amps @ 24 Vdc).  
 2. Not UL listed for DC input.  
 3. Input current ratings are conservatively specified with low input, worst case efficiency and power factor.

4. Losses are heat dissipation in watts at full load, nominal input line.  
 5. Ripple/noise is stated as typical values when measured with a 20 MHz, bandwidth scope and 50 Ohm resistor.  
 6. Full load, 100 Vac Input @  $T_{amb} = +25°C$   
 7. For the SDN 40-24-480, output: one (+) two (-) connectors, size range 16-5 AWG (1.5016 mm<sup>2</sup>) solid conductor.

SDN™ Series Dimensions



Catalog Number	Dimensions – inches (mm)		
	H	W	D
<b>12 Vdc</b>			
SDN 9–12–100P	4.88 (124)	2.56 (65)	4.55 (116)
SDN 16–12–100P	4.88 (124)	3.26 (83)	4.55 (116)
<b>24 Vdc</b>			
SDN 2.5–24–100P	4.88 (124)	1.97 (50)	4.55 (116)
SDN 4–24–100LP	4.88 (124)	2.56 (65)	4.55 (116)
SDN 5–24–100P	4.88 (124)	2.56 (65)	4.55 (116)
SDN 5–24–480	4.88 (124)	2.91 (73)	4.55 (116)
SDN 10–24–100P	4.88 (124)	3.26 (83)	4.55 (116)
SDN 20–24–100P	4.88 (124)	6.88 (175)	4.55 (116)
<b>48 Vdc</b>			
SDN 5–48–100P	4.88 (124)	3.26 (83)	4.55 (116)



Catalog Number	Dimensions – inches (mm)		
	H	W	D
SDN 10–24–480	4.88 (124)	5.90 (150)	4.55 (116)
SDN 30–24–480	4.88 (124)	9.72 (247)	4.55 (116)
SDN 40–24–480	4.88 (124)	11.10 (282)	4.55 (116)